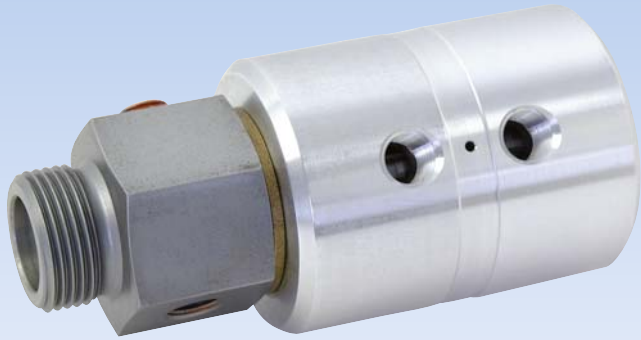


DEUBLIN

Rotating Union

DEU-PLEX for Air and Hydraulic Service, DN 8 - 20



- duoflow design
- Tandem model as triple passage design
- self-supported rotating union
- composite bearing
- vent holes between passages
- carbon-filled teflon seals
- hardened sealing surface
- aluminium housing
- steel rotor

Operating Data

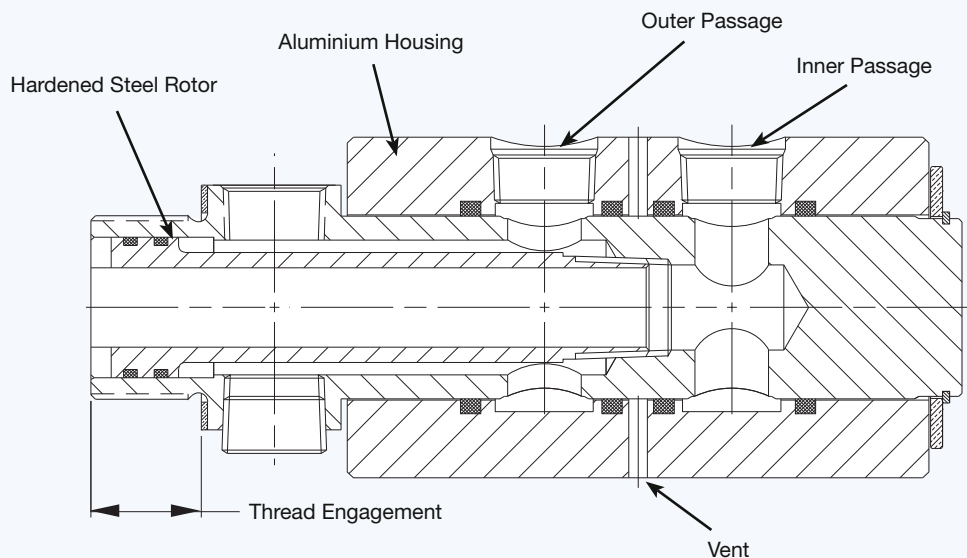
Max. Air Pressure	150 PSI	10 bar
Max. Vacuum	2 "Hg	7 kPa
Max. Hydraulic Pressure*	3,050 PSI	210 bar
Max. Speed (short-term)*	250 RPM	250 min ⁻¹
Max. Temperature	120 °C	> 120 °C consult DEUBLIN

* Operation at max. pressure combined with max. speed is not permissible

For further information please contact **DEUBLIN** or your local representative.

Additional models for high pressure hydraulic applications are available. Please contact **DEUBLIN** or your local representative.

Models with inner rotors



Models without inner rotors can be used for coaxial feed applications as shown below.

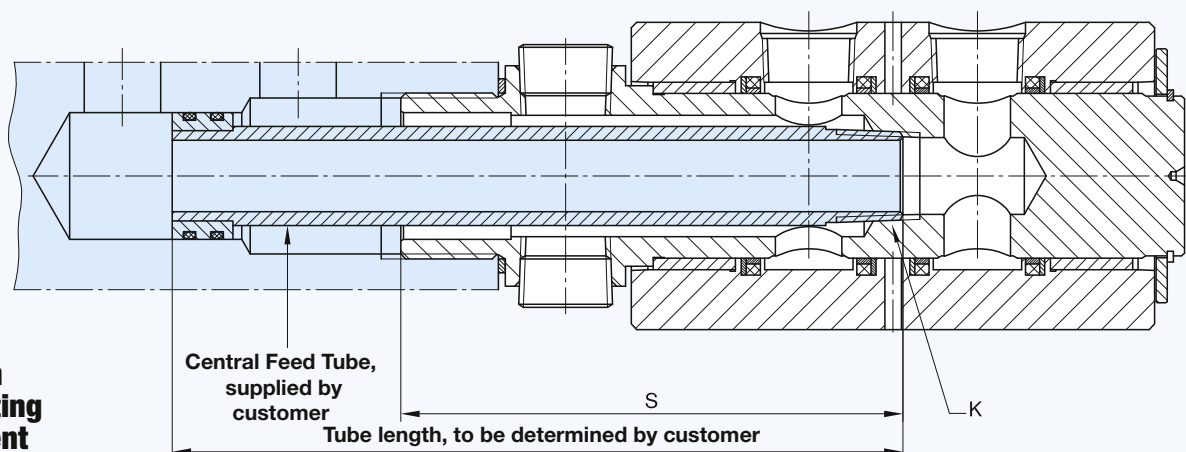
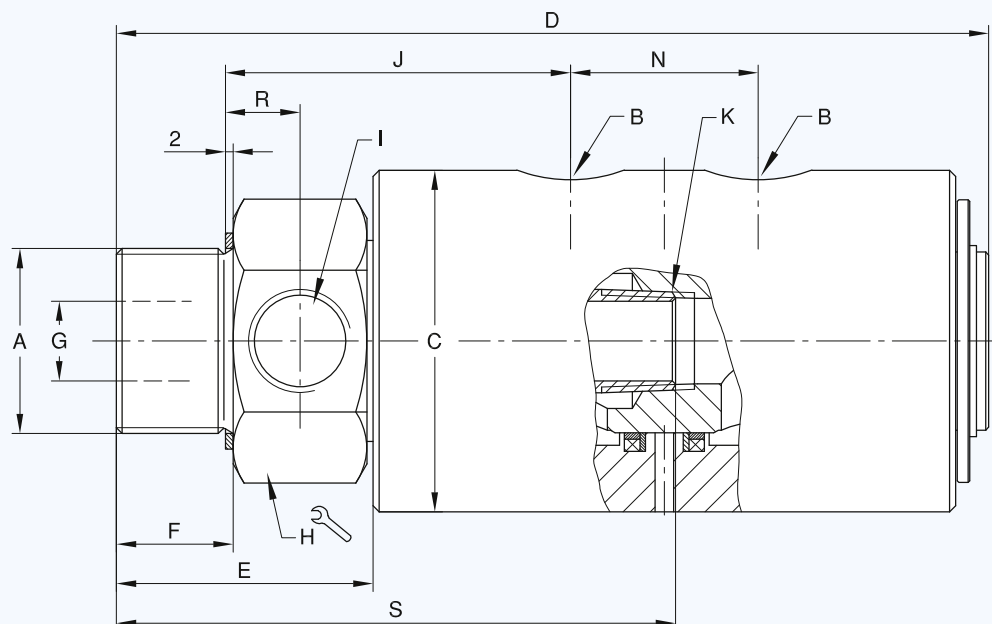


Illustration of a mounting arrangement

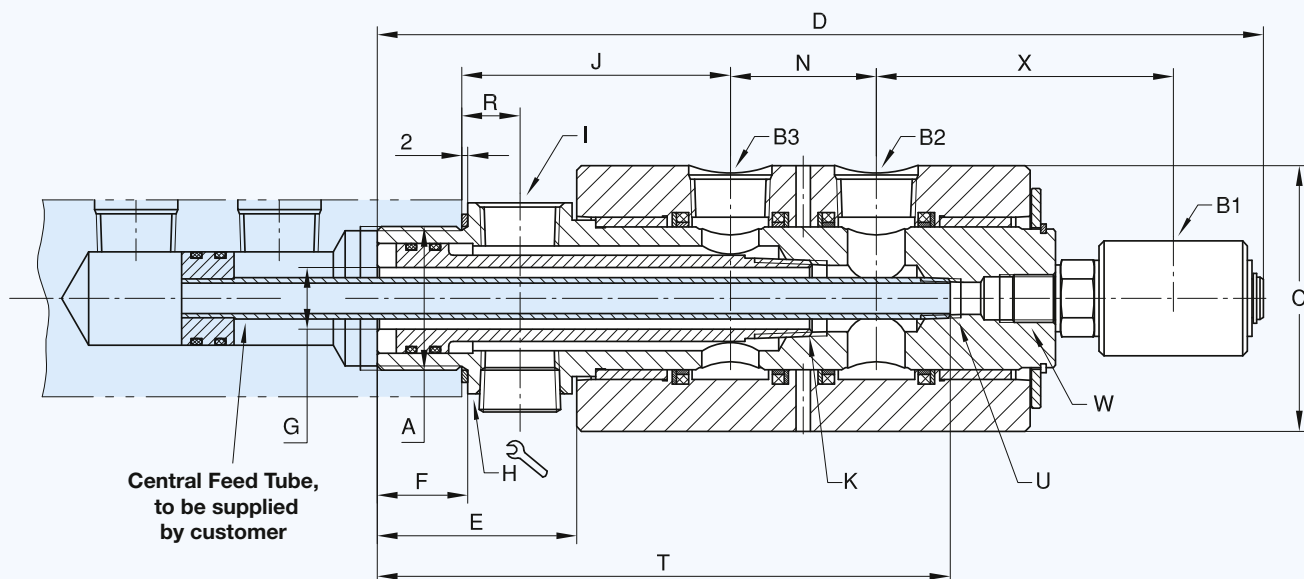
Duoflow Rotating Union



DN	B NPT	Ordering No.	A Rotor Connections		C ∅	D	E	F	G ∅	H ↻	I NPT	J	K NPT	N	R	S	kg
2 x 8	2 x 1/4	1690-000-168	G 1	RH	66,4	150	55,5	18	8	46	1/4	68	1/4	29,5	19	-	1,6
	2 x 1/4	1690-000-105*	G 1	RH	66,4	150	55,5	18	17,5	46	1/4	68	1/4	29,5	19	97,4	1,6
2 x 15	2 x 1/2	1790-001-114	G 1 1/4	RH	76	208	63	28	16	55	1/2	85	1/2	42	18	-	3,1
	2 x 1/2	1790-001-112*	G 1 1/4	RH	76	208	63	28	27	55	1/2	85	1/2	42	18	133,2	3,1
2 x 20	2 x 3/4	1890-060	G 1 1/2	RH	88,5	226	66	30	20,6	65	3/4	89	3/4	49	19,5	-	4,4
	2 x 3/4	1890-063*	G 1 1/2	RH	88,5	226	66	30	34,9	65	3/4	89	3/4	49	19,5	149,4	4,2

* These models are delivered without inner rotors.

Triple Passage Rotating Union



DN	B1 x B2 x B3 NPT	Ordering No.	A Rotor Connect.		C ∅	D	E	F	G ∅	H ↻	I NPT	J	K NPT	N	R	T	U NPT	W	X	kg
8/15/20	1/4 x 3/4 x 3/4	1890-064	G 1 1/2	RH	88,5	293	67	30	20,6	65	3/4	89	3/4	48,5	19,5	190	1/4	5/8-18 UNF RH	98	4,7

DEUBLIN

Rotating Union

for Air, Hydraulic Oil, Brake Fluid and Vacuum Service, DN 8 and 15



Operating Data

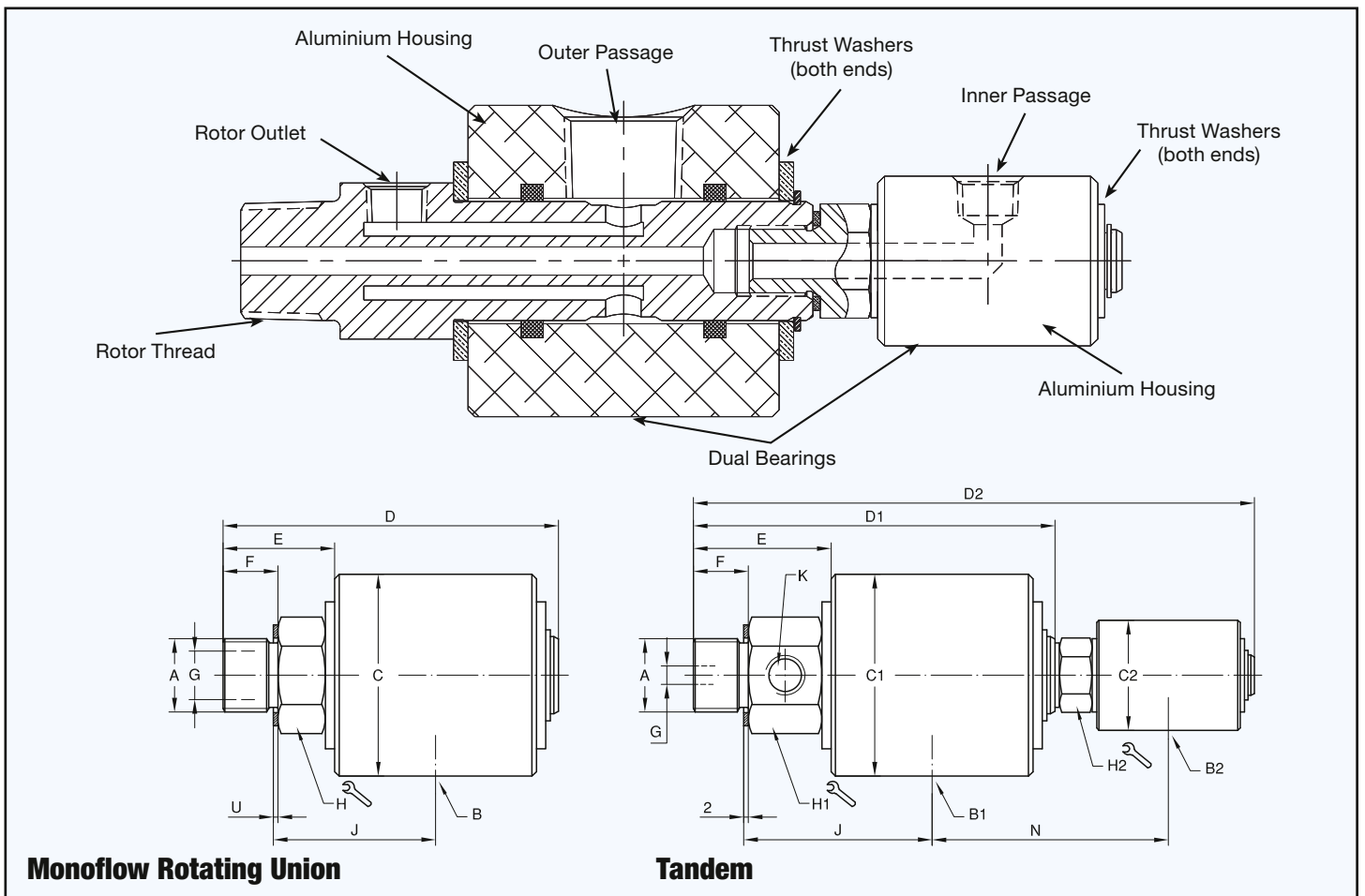
Max. Air Pressure	150 PSI	10 bar
Max. Vacuum	2 "Hg	7 kPa
Max. Hydraulic Pressure*	3,050 PSI	210 bar
Max. Speed (short-term)*	250 RPM	250 min ⁻¹

Max. Temperature 120 °C > 120 °C consult **DEUBLIN**

* Operation at max. pressure combined with max. speed is not permissible

- monoflow and duoflow (Tandem) design
- self-supported rotating union
- no interpassage leakage on the duoflow design
- hardened sealing surface
- oilite bearing
- aluminium housing
- steel rotor
- optional models for swivel movements

For further information please contact **DEUBLIN** or your local representative.



Monoflow Rotating Union

DN	B NPT	Ordering No.		A Rotor Connections	C ∅	D	E	F	G ∅	H	J	U	kg
		Air/Hydraulic/Vacuum	Brake Fluid										
8	1/4	17-025-039	17-086-039	G 3/8 RH	38	83,3	29	16	8	22	39	1,5	0,3
	1/4	17-025-046	17-086-046	M16 x 2 RH	38	83,3	29	16	8	22	39	1,5	0,3
15	1/2	21-001-122	21-063-122	G 3/4 RH	70	116	39	19	16	36	57	2	1,2
	1/2	21-001-121	21-063-121	M22 x 1,5 RH	70	111	34	14	13	36	57	1,5	1,2

Duoflow Rotating Union (Tandem)

DN	B1 x B2 NPT	Ordering No.		A Rotor Connections	C1 ∅	C2 ∅	D1	D2	E	F	G ∅	H1	H2	J	K NPT	N	kg
		Air/Hydraulic/Vacuum	Brake Fluid														
2 x 8	1/4 x 1/2	2117-001-105	2117-018-137	G 3/4 RH	70	38	125	194	48	19	6,4	36	22	66	1/4	81	1,5

DEUBLIN

Rotating Union 1379 and 1479 Series 4-Passage for Various Media



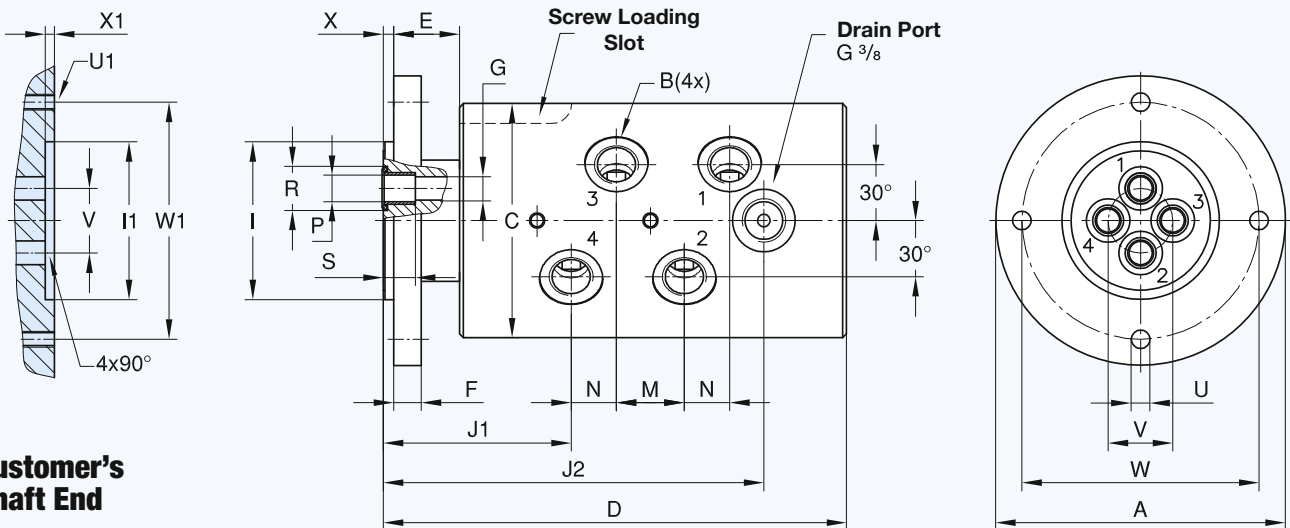
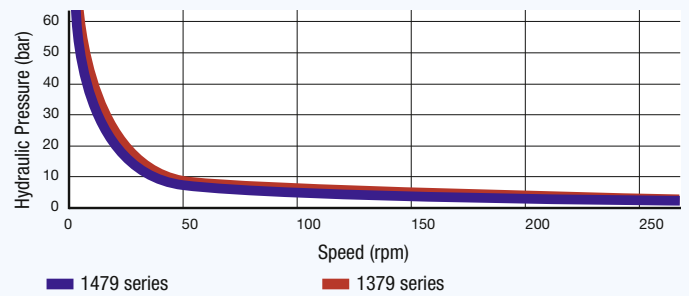
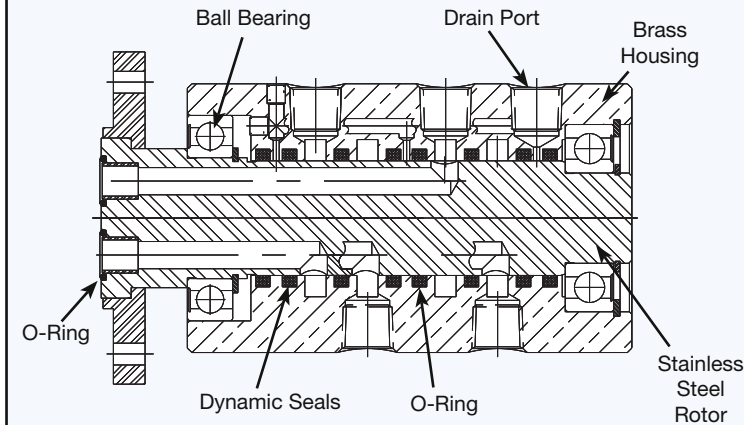
Operating Data

Max. Air Pressure*	145 PSI	10 bar
Max. Hydraulic Pressure (rotating)*	870 PSI	60 bar
Max. Hydraulic Pressure (very slow rotating)	3.626 PSI	250 bar
Max. Vacuum	2 "Hg	7 kPa
Max. Speed	250 RPM	250 min ⁻¹
Max. Flow per Passage		
1379 series	14 GPM	53 l/min
1479 series	28.5 GPM	108 l/min
Max. Temperature	80 °C	> 80 °C consult DEUBLIN
Filtration	ISO 4406 Class 17/15/12, max. 60 micron	

- four independent passages for applications such as clamping and unclamping, work piece or tool sensing, and spindle cooling
- vent between passages 2 and 3 allows use of two different media without cross contamination. For example, air in passages 1 and 2 and hydraulic oil in passages 3 and 4
- stainless steel and brass components resist corrosion
- hardened chrome sealing surface and elastomer-energized seals
- dual, widely spaced ball bearings absorb large side loads

For further information please contact **DEUBLIN** or your local representative.

* Operating conditions vary depending on the application and must be adjusted so as not to exceed the maximum union housing temperature rating of 90 °C.



DN	B	Ordering No.	A ø	C ø	D	E	F	G ø	I ø PT	I1 ø PT	J1	J2	M	N	P ø	R ø	S	U ø	U1 ø	V ø	W ø	X	X1	W1 ø	kg
4x 10	4x G 3/8	1379-160	110	88	176	25	10	9	60,000 59,981	60,060 60,030	72	144,5	26	17	12,05 12,00	16,7	12	7,2	M6 4x90°	24,5	90	4	3,5	90	7,6
4x 10 + centr. pass.	4x G 3/8	1379-860	110	88	176	25	10	9	60,000 59,981	60,060 60,030	72	144,5	26	17	12,05 12,00	16,7	12	7,2	M6 4x90°	24,5	90	4	3,5	90	7,6
4x 15	4x G 1/2	1479-100	130	108	202	25	13	13	75,000 74,981	75,060 75,030	81	172	31	23	15,05 15,00	19,7	15	9	M8 4x90°	29	110	4	3,5	110	12,7
4x 15 + centr. pass.	4x G 1/2	1479-800	130	108	202	25	13	13	75,000 74,981	75,060 75,030	81	172	31	23	15,05 15,00	19,7	15	9	M8 4x90°	29	110	4	3,5	110	12,7



DEUBLIN

Rotating Union

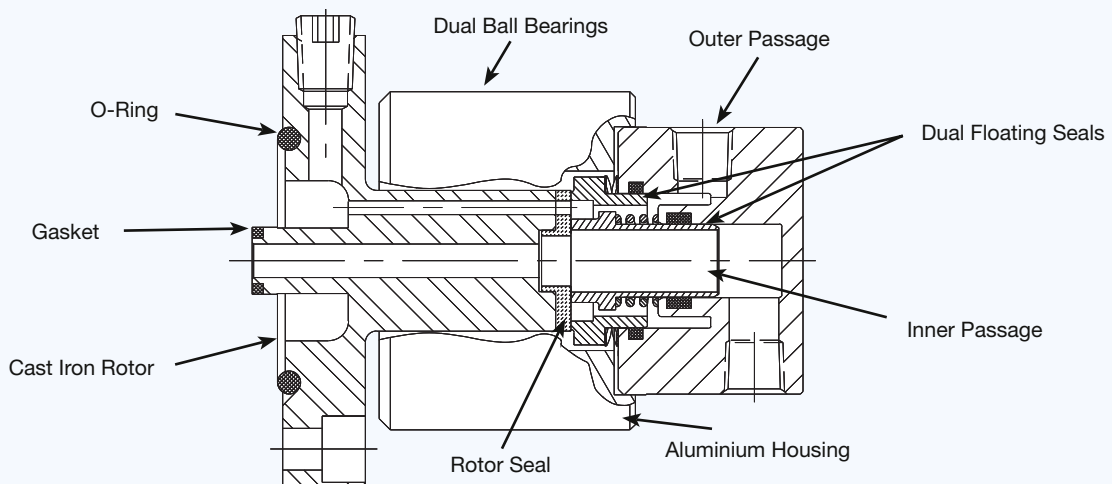
DEU-PLEX for Air Service, DN 10

- duoflow design
- self-supported rotating union
- flange rotor
- radial housing connections
- low torque
- double-balanced mechanical seal
- full-media flow
- oiler for relubrication (3 - 5 drops/month)
- aluminium housing
- cast iron rotor
- Lubrication Guide page 52

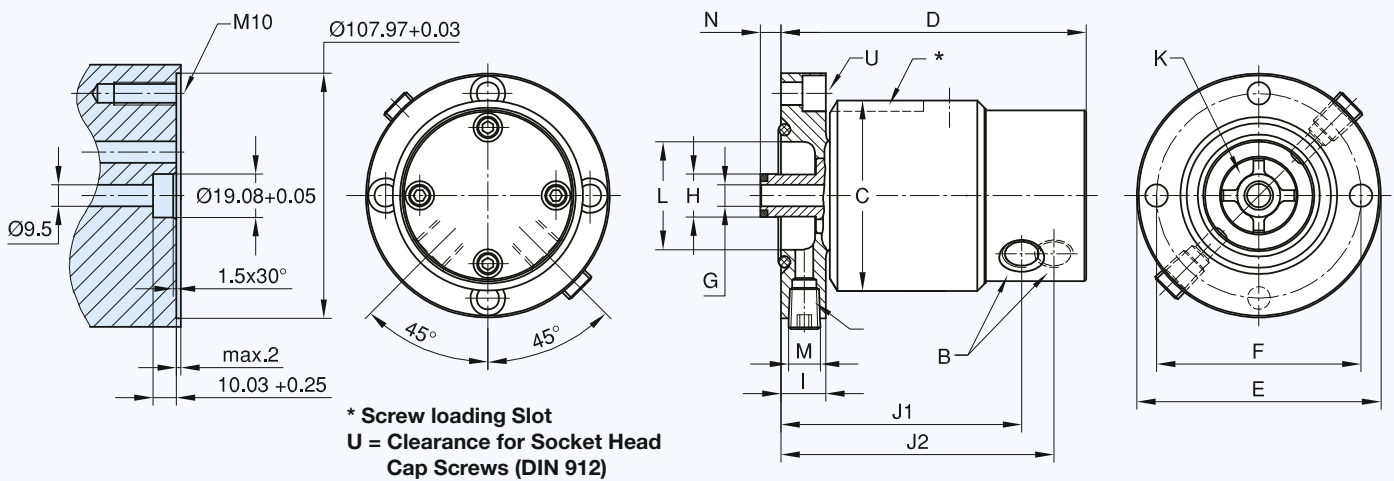
For further information please contact **DEUBLIN** or your local representative.


Operating Data

Max. Air Pressure	150 PSI	10 bar
Max. Vacuum	2 "Hg	7 kPa
Max. Speed	1,500 RPM	1,500 min ⁻¹
Max. Temperature	120 °C	> 120 °C consult DEUBLIN



Customer's Shaft End



DN	B NPT	Ordering No.	C ø	D	E ø PT	F ø	G mm ²	H ø	I	J1	J2	K mm ²	L ø	M NPT	N	U Screws DIN 912	
2 x 10	2 x 3/8	1500-250	84	135	107,95 107,92	90,5	71	19,05 19,00	20	106	121	150	48	2 x 1/4	11,2	M10	3

DEUBLIN

Rotating Union

DEU-PLEX for Air and Hydraulic Oil Service, DN 15

- duoflow design
- self-supported rotating union
- radial and axial housing connections
- full-media flow
- oiler for relubrication (3 - 5 drops/month)
- aluminium housing
- cast iron flange rotor
- Lubrication Guide page 52

Double-balanced mechanical seal:

- standard: Carbon Graphite/Ceramic
- E.L.S. (Extended Life Sealing): Tungsten Carbide/Ceramic

For further information please contact **DEUBLIN** or your local representative.

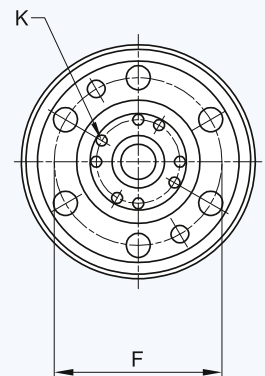
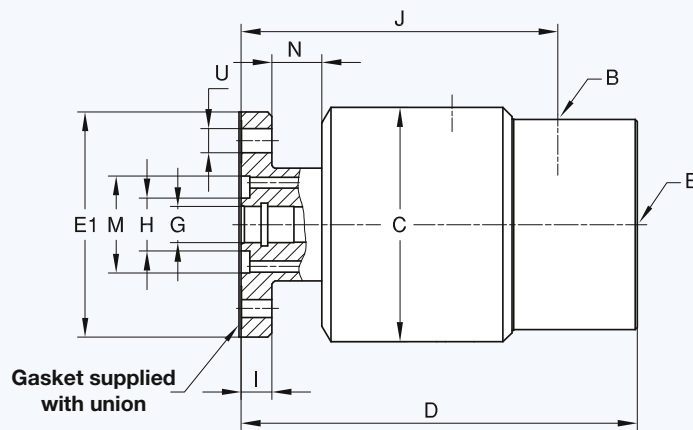
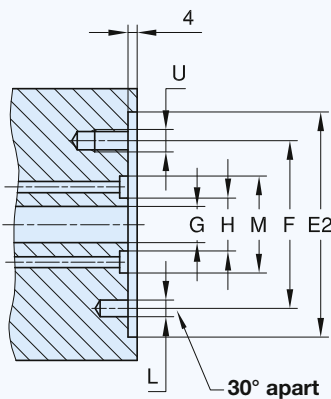
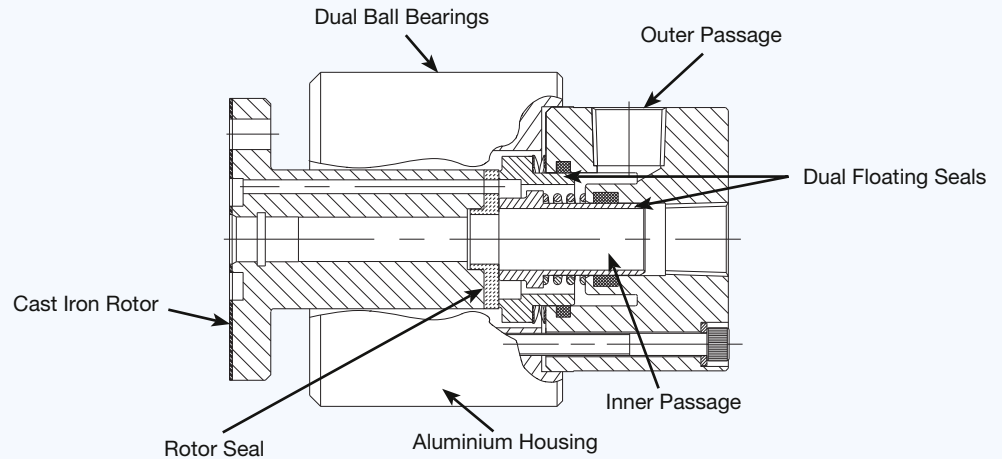
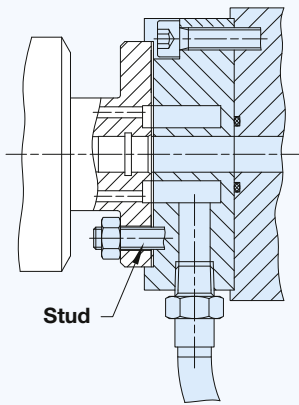
¹ Only one passage should be pressurized at a time.

² Operation at max. pressure combined with max. speed is not permissible. For the higher pressure use inner passage only

Operating Data

Max. Air Pressure ¹ (1590)	150 PSI	10 bar
Max. Hydraulic Pressure ² (1579)		
outer passage	510 PSI	35 bar
inner passage	1,020 PSI	70 bar
Max. Speed ²	1,500 RPM	1,500 min ⁻¹
Max. Temperature	120 °C	> 120 °C consult DEUBLIN

Typical Adapter Mounting Arrangement



DN	B NPT	Ordering No.	Media	C ∅	D ∅	E1 ∅ PT	E2 ∅	F ∅	G mm ²	H ∅	I ∅	J	K mm ²	L Dowel Pin ∅	M ∅	N ∅	U ∅	kg
2x 15	2 x 1/2	1590-000 STD	Air	84	143	81,000 80,985	81,050 81,020	60,3	126	19	11	114	100	6	35	19	8,7 M8	2,5
	2 x 1/2	1579-000 STD	Hydraulic Oil	84	143	81,000 80,985	81,050 81,020	60,3	126	19	11	114	100	6	35	19	8,7 M8	2,5
	2 x 1/2	1579-074 ELS	Hydraulic Oil	96	142	81,000 80,985	81,050 81,020	60,3	126	19	11	113	100	6	35	12	8,7 M8	3,1

DEUBLIN

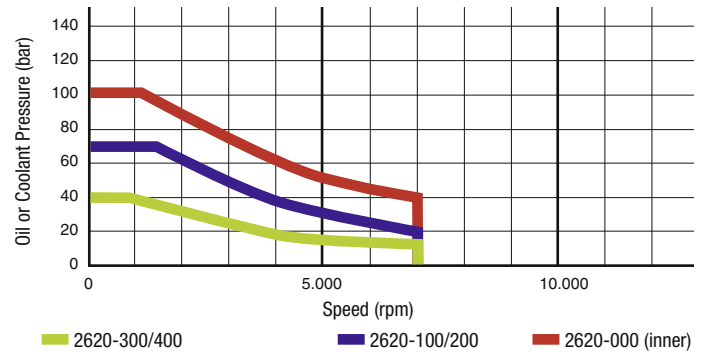
2620 Series 2-Passage Rotating Unions for Various Media



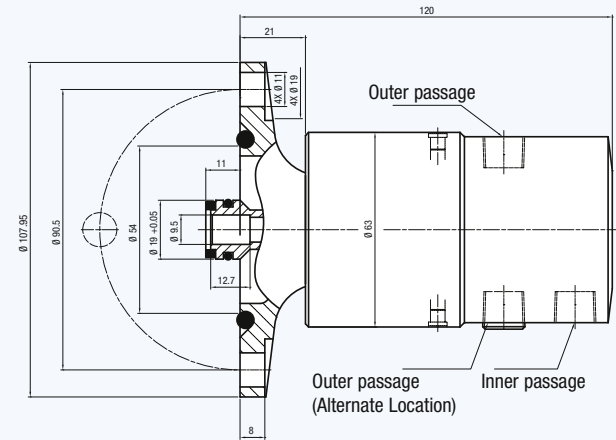
- two independent passages for applications such as clamping and unclamping
- balanced mechanical seals for each passage provide long life and reduced torque even at maximum pressure
- closed seals provide continuous containment of media
- dual precision ball bearings for smooth operation
- labyrinth protection for ball bearings
- mountings options are compatible with *DEUBLIN* 1579 series unions (see page 43)

Operating Data

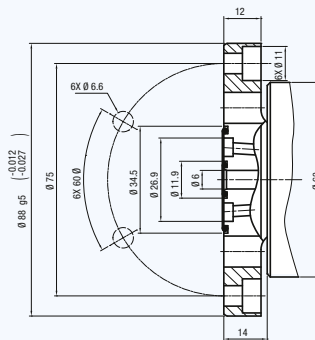
Media	see chart	
Filtration	ISO 4406 Class 17/15/12, max. 60 micron	
Max. Speed	7.000 min ⁻¹	7,000 rpm
Max. Pressure	see chart/table	
Max. Flow	69 l/min	18.2 gpm (per passage)
Max. Temperature	71°C	160°F



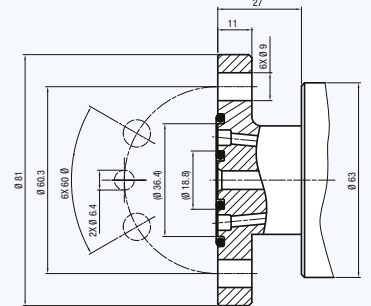
2620-xxx-252



2620-xxx-940



2620-xxx-157



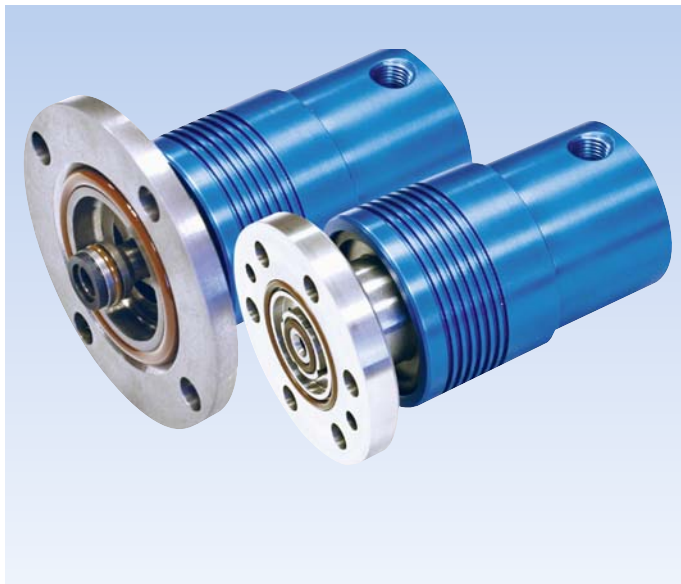
With Ø 108 mm flanged rotor		With Ø 88 mm flanged rotor		With Ø 81 mm flanged rotor		Inner Passage		Outer Passage		Notes
Ordering Number	Supply Connections	Ordering Number	Supply Connections	Ordering Number	Supply Connections	Media	Max. Pressure [bar]	Media	Max. Pressure [bar]	
	Inner and outer Passage		Inner Passage		Outer Passage					Inner and outer Passage
2620-000-252	1/4 NPT	2620-002-940	G 1/4 G 1/4	2620-000-157	1/4 NPT	Hydraulic Oil	100	Hydraulic Oil	30	
2620-100-252	1/4 NPT	2620-102-940	G 3/8 G 1/8	2620-100-157	1/4 NPT	Hydraulic Oil	70	Compressed Air	6	Air seals may be lubricated through oil cup or by using oiled air.
2620-120-252	1/4 NPT	2620-122-940	G 3/8 G 1/8	2620-120-157	1/4 NPT	Hydraulic Oil	70	Compressed Air	10	
2620-200-252	1/4 NPT	2620-202-940	G 3/8 G 1/8	2620-200-157	1/4 NPT	Coolant	70	Compressed Air	6	
2620-220-252	1/4 NPT	2620-222-940	G 3/8 G 1/8	2620-220-157	1/4 NPT	Coolant	70	Compressed Air	10	
2620-300-252	1/4 NPT	2620-302-940	G 1/4 G 1/4	2620-300-157	1/4 NPT	Compressed Air	6	Hydraulic Oil	40	Air seals require no external lubrication.
2620-320-252	1/4 NPT	2620-322-940	G 1/4 G 1/4	2620-320-157	1/4 NPT	Compressed Air	10	Hydraulic Oil	40	
2620-400-252	1/4 NPT	2620-402-940	G 1/4 G 1/4	2620-400-157	1/4 NPT	Compressed Air	6	Coolant	40	
2620-420-252	1/4 NPT	2620-422-940	G 1/4 G 1/4	2620-420-157	1/4 NPT	Compressed Air	10	Coolant	40	
2620-500-252	1/4 NPT	2620-502-940*	G 3/8 G 1/8	2620-500-157	1/4 NPT	Compressed Air	6	Compressed Air	6	Consult <i>DEUBLIN</i> regarding maximum speed.
2620-520-252	1/4 NPT	2620-522-940	G 3/8 G 1/8	2620-520-157	1/4 NPT	Compressed Air	10	Compressed Air	10	

* Inner passage allowed for operation with hydraulic 70 bar and coolant 70 bar.

DEUBLIN

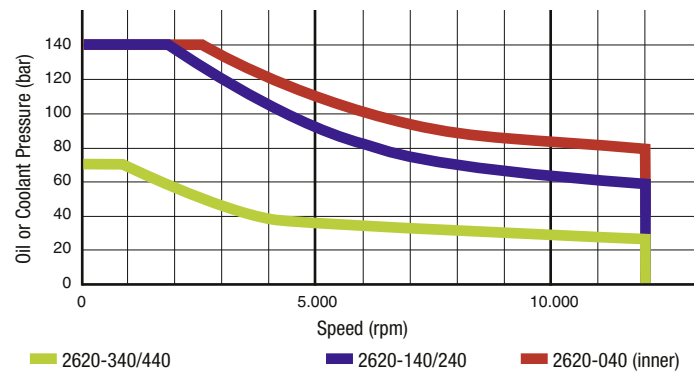
2620 Series 2-Passage Rotating Unions for Various Media

- two independent passages for applications such as clamping and unclamping, work piece sensing, and cooling
- balanced mechanical seals for each passage provide long life and reduced torque even at maximum pressure
- closed seals provide continuous containment of media
- dual precision ball bearings for smooth operation
- labyrinth protection for ball bearings
- mountings options are compatible with **DEUBLIN 1579** series unions (see page 43)

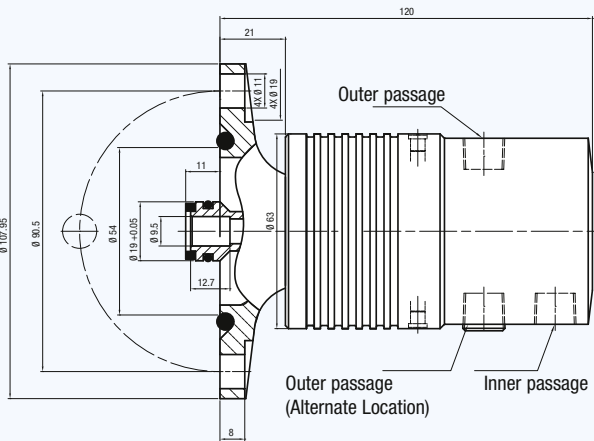


Operating Data

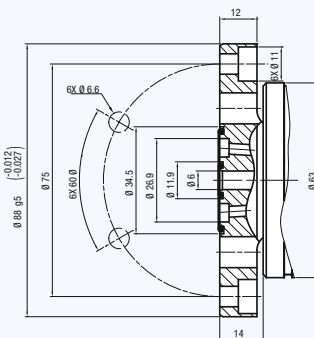
Media	see chart	
Filtration	ISO 4406 Class 17/15/12, max. 60 micron	
Max. Speed	12.000 min ⁻¹	12,000 rpm
Max. Pressure	see chart/table	
Max. Flow	69 l/min	18.2 gpm (per passage)
Max. Temperature	71°C	160°F



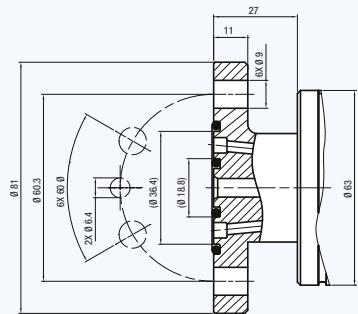
2620-xxx-252



2620-xxx-940



2620-xxx-157



With Ø 108 mm flanged rotor		With Ø 88 mm flanged rotor		With Ø 81 mm flanged rotor		Inner Passage		Outer Passage		Notes	
Ordering Number	Supply Connections	Ordering Number	Supply Connections		Ordering Number	Supply Connections	Media	Max. Pressure [bar]	Media		Max. Pressure [bar]
	Inner and outer Passage		Inner Passage	Outer Passage						Inner and outer Passage	
2620-040-252	1/4 NPT	2620-042-940	G 1/4	G 1/4	2620-040-157	1/4 NPT	Hydraulic Oil	140	Hydraulic Oil	70	
2620-140-252	1/4 NPT	2620-142-940	G 3/8	G 1/8	2620-140-157	1/4 NPT	Hydraulic Oil	140	Compressed Air	6	Air seals may be lubricated through oil cup or by using oiled air.
2620-160-252	1/4 NPT	2620-162-940	G 3/8	G 1/8	2620-160-157	1/4 NPT	Hydraulic Oil	140	Compressed Air	10	
2620-240-252	1/4 NPT	2620-242-940	G 3/8	G 1/8	2620-240-157	1/4 NPT	Coolant	140	Compressed Air	6	
2620-260-252	1/4 NPT	2620-262-940	G 3/8	G 1/8	2620-260-157	1/4 NPT	Coolant	140	Compressed Air	10	
2620-340-252	1/4 NPT	2620-342-940	G 1/4	G 1/4	2620-340-157	1/4 NPT	Compressed Air	6	Hydraulic Oil	70	Air seals require no external lubrication.
2620-360-252	1/4 NPT	2620-362-940	G 1/4	G 1/4	2620-360-157	1/4 NPT	Compressed Air	10	Hydraulic Oil	70	
2620-440-252	1/4 NPT	2620-442-940	G 1/4	G 1/4	2620-440-157	1/4 NPT	Compressed Air	6	Coolant	70	
2620-460-252	1/4 NPT	2620-462-940	G 1/4	G 1/4	2620-460-157	1/4 NPT	Compressed Air	10	Coolant	70	